

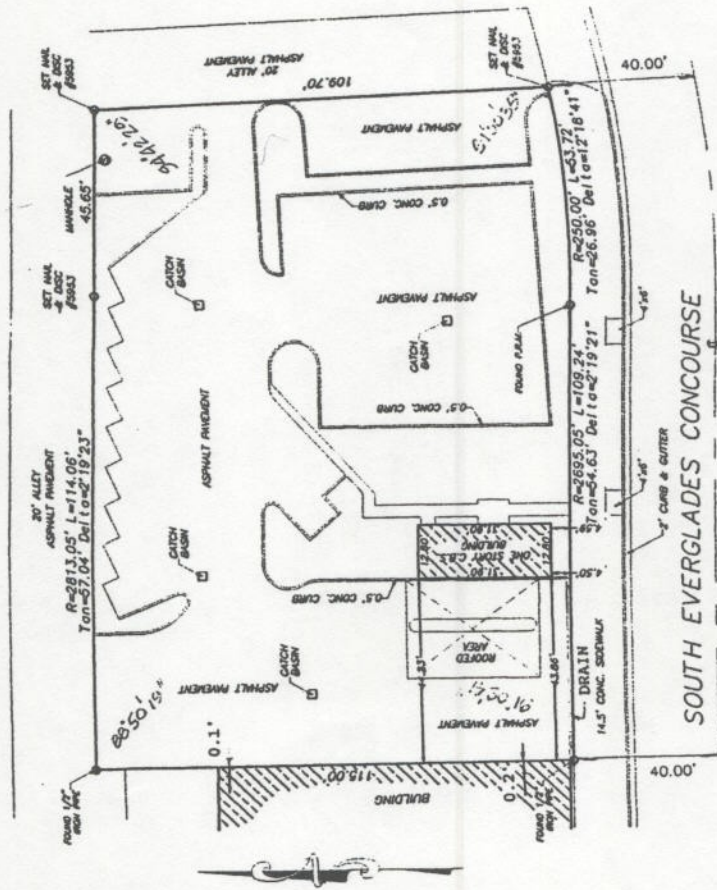


Kari F. Kuhn
Professional Surveyor & Mapper
8650 S.W. 133rd Ave. RD
Suite 410
Miami, Florida 33183
Tel: (305) 386-1551
Fax: (305) 752-3078
Pager: (305) 860-8198
E-mail: kuhnsurveyor@attavista.com

SKETCH OF BOUNDARY SURVEY

LEGAL DESCRIPTION

LOTS 45, 46, 47, 48, 49 AND 50 OF OCEANSIDE SECTION ISLE OF NORMANDY,
ACCORDING TO THE PLAT THEREOF AS RECORDED IN PLAT BOOK 25 AT
PAGE 60 OF THE PUBLIC RECORDS OF MIAMI-DADE COUNTY, FLORIDA.



- LEGEND**
- A
 - BL
 - B
 - C
 - CB
 - CC
 - CD
 - CE
 - CF
 - CG
 - CH
 - CI
 - CJ
 - CK
 - CL
 - CM
 - CN
 - CO
 - CP
 - CQ
 - CR
 - CS
 - CT
 - CU
 - CV
 - CW
 - CX
 - CY
 - CZ
 - DA
 - DB
 - DC
 - DD
 - DE
 - DF
 - DG
 - DH
 - DI
 - DJ
 - DK
 - DL
 - DM
 - DN
 - DO
 - DP
 - DQ
 - DR
 - DS
 - DT
 - DU
 - DV
 - DW
 - DX
 - DY
 - DZ
 - EA
 - EB
 - EC
 - ED
 - EE
 - EF
 - EG
 - EH
 - EI
 - EJ
 - EK
 - EL
 - EM
 - EN
 - EO
 - EP
 - EQ
 - ER
 - ES
 - ET
 - EU
 - EV
 - EW
 - EX
 - EY
 - EZ
 - FA
 - FB
 - FC
 - FD
 - FE
 - FF
 - FG
 - FH
 - FI
 - FJ
 - FK
 - FL
 - FM
 - FN
 - FO
 - FP
 - FQ
 - FR
 - FS
 - FT
 - FU
 - FV
 - FW
 - FX
 - FY
 - FZ
 - GA
 - GB
 - GC
 - GD
 - GE
 - GF
 - GG
 - GH
 - GI
 - GJ
 - GK
 - GL
 - GM
 - GN
 - GO
 - GP
 - GQ
 - GR
 - GS
 - GT
 - GU
 - GV
 - GW
 - GX
 - GY
 - GZ
 - HA
 - HB
 - HC
 - HD
 - HE
 - HF
 - HG
 - HH
 - HI
 - HJ
 - HK
 - HL
 - HM
 - HN
 - HO
 - HP
 - HQ
 - HR
 - HS
 - HT
 - HU
 - HV
 - HW
 - HX
 - HY
 - HZ
 - IA
 - IB
 - IC
 - ID
 - IE
 - IF
 - IG
 - IH
 - II
 - IJ
 - IK
 - IL
 - IM
 - IN
 - IO
 - IP
 - IQ
 - IR
 - IS
 - IT
 - IU
 - IV
 - IW
 - IX
 - IY
 - IZ
 - JA
 - JB
 - JC
 - JD
 - JE
 - JF
 - JG
 - JH
 - JI
 - JJ
 - JK
 - JL
 - JM
 - JN
 - JO
 - JP
 - JQ
 - JR
 - JS
 - JT
 - JU
 - JV
 - JW
 - JX
 - JY
 - JZ
 - KA
 - KB
 - KC
 - KD
 - KE
 - KF
 - KG
 - KH
 - KI
 - KJ
 - KK
 - KL
 - KM
 - KN
 - KO
 - KP
 - KQ
 - KR
 - KS
 - KT
 - KU
 - KV
 - KW
 - KX
 - KY
 - KZ
 - LA
 - LB
 - LC
 - LD
 - LE
 - LF
 - LG
 - LH
 - LI
 - LJ
 - LK
 - LM
 - LN
 - LO
 - LP
 - LQ
 - LR
 - LS
 - LT
 - LU
 - LV
 - LW
 - LX
 - LY
 - LZ
 - MA
 - MB
 - MC
 - MD
 - ME
 - MF
 - MG
 - MH
 - MI
 - MJ
 - MK
 - ML
 - MM
 - MN
 - MO
 - MP
 - MQ
 - MR
 - MS
 - MT
 - MU
 - MV
 - MW
 - MX
 - MY
 - MZ
 - NA
 - NB
 - NC
 - ND
 - NE
 - NF
 - NG
 - NH
 - NI
 - NJ
 - NK
 - NL
 - NM
 - NN
 - NO
 - NP
 - NQ
 - NR
 - NS
 - NT
 - NU
 - NV
 - NW
 - NX
 - NY
 - NZ
 - OA
 - OB
 - OC
 - OD
 - OE
 - OF
 - OG
 - OH
 - OI
 - OJ
 - OK
 - OL
 - OM
 - ON
 - OO
 - OP
 - OQ
 - OR
 - OS
 - OT
 - OU
 - OV
 - OW
 - OX
 - OY
 - OZ
 - PA
 - PB
 - PC
 - PD
 - PE
 - PF
 - PG
 - PH
 - PI
 - PJ
 - PK
 - PL
 - PM
 - PN
 - PO
 - PP
 - PQ
 - PR
 - PS
 - PT
 - PU
 - PV
 - PW
 - PX
 - PY
 - PZ
 - QA
 - QB
 - QC
 - QD
 - QE
 - QF
 - QG
 - QH
 - QI
 - QJ
 - QK
 - QL
 - QM
 - QN
 - QO
 - QP
 - QQ
 - QR
 - QS
 - QT
 - QU
 - QV
 - QW
 - QX
 - QY
 - QZ
 - RA
 - RB
 - RC
 - RD
 - RE
 - RF
 - RG
 - RH
 - RI
 - RJ
 - RK
 - RL
 - RM
 - RN
 - RO
 - RP
 - RQ
 - RR
 - RS
 - RT
 - RU
 - RV
 - RW
 - RX
 - RY
 - RZ
 - SA
 - SB
 - SC
 - SD
 - SE
 - SF
 - SG
 - SH
 - SI
 - SJ
 - SK
 - SL
 - SM
 - SN
 - SO
 - SP
 - SQ
 - SR
 - SS
 - ST
 - SU
 - SV
 - SW
 - SX
 - SY
 - SZ
 - TA
 - TB
 - TC
 - TD
 - TE
 - TF
 - TG
 - TH
 - TI
 - TJ
 - TK
 - TL
 - TM
 - TN
 - TO
 - TP
 - TQ
 - TR
 - TS
 - TT
 - TU
 - TV
 - TW
 - TX
 - TY
 - TZ
 - UA
 - UB
 - UC
 - UD
 - UE
 - UF
 - UG
 - UH
 - UI
 - UJ
 - UK
 - UL
 - UM
 - UN
 - UO
 - UP
 - UQ
 - UR
 - US
 - UT
 - UU
 - UV
 - UW
 - UX
 - UY
 - UZ
 - VA
 - VB
 - VC
 - VD
 - VE
 - VF
 - VG
 - VH
 - VI
 - VJ
 - VK
 - VL
 - VM
 - VN
 - VO
 - VP
 - VQ
 - VR
 - VS
 - VT
 - VU
 - VV
 - VW
 - VX
 - VY
 - VZ
 - WA
 - WB
 - WC
 - WD
 - WE
 - WF
 - WG
 - WH
 - WI
 - WJ
 - WK
 - WL
 - WM
 - WN
 - WO
 - WP
 - WQ
 - WR
 - WS
 - WT
 - WU
 - WV
 - WW
 - WX
 - WY
 - WZ
 - XA
 - XB
 - XC
 - XD
 - XE
 - XF
 - XG
 - XH
 - XI
 - XJ
 - XK
 - XL
 - XM
 - XN
 - XO
 - XP
 - XQ
 - XR
 - XS
 - XT
 - XU
 - XV
 - XW
 - XX
 - XY
 - XZ
 - YA
 - YB
 - YC
 - YD
 - YE
 - YF
 - YG
 - YH
 - YI
 - YJ
 - YK
 - YL
 - YM
 - YN
 - YO
 - YP
 - YQ
 - YR
 - YS
 - YT
 - YU
 - YV
 - YW
 - YX
 - YY
 - YZ
 - ZA
 - ZB
 - ZC
 - ZD
 - ZE
 - ZF
 - ZG
 - ZH
 - ZI
 - ZJ
 - ZK
 - ZL
 - ZM
 - ZN
 - ZO
 - ZP
 - ZQ
 - ZR
 - ZS
 - ZT
 - ZU
 - ZV
 - ZW
 - ZX
 - ZY
 - ZZ

CERTIFIED TO:
JERIKKA
ATTORNEYS' TITLE INSURANCE FUND, INC.
LAW OFFICES OF RICHARD WASSERSTEIN

SURVEYOR'S NOTES:

- 1) This above explained Property was surveyed and described based on the above Legal Description. Provided by Client.
- 2) All bearings and distances shown herein are recorded and returned unless otherwise stated.
- 3) The lands shown herein were not abstracted for assessment or other recorded encumbrances set on this plot and the other recorded encumbrances set on this plot and the surrounding area were not abstracted for assessment or other recorded encumbrances set on this plot and the surrounding area.
- 4) Boundary lines of the parcel herein described are not shown (background).
- 5) Distances are based on the National Geodetic Vertical Datum 1988.
- 6) From this are to be the center line of the road.
- 7) All lines are in feet of the road.
- 8) Ownership subject to opinion of the title.
- 9) Encumbrances are shown on the title.
- 10) Survey and abstracts are not verified by this survey.

SURVEYOR'S CERTIFICATE:

I hereby certify that this survey meets the minimum technical standards as set forth by the Florida Board of Surveyors and is in accordance with the Florida Administrative Code, particularly sections 172A.022, Florida Statutes. And is true and correct to the best of my knowledge and belief.

NOT VALID UNLESS SEALED AND COUNTERSIGNED WITH SURVEYOR'S SEAL

Karl F. Kuhn
Karl F. Kuhn
Professional Surveyor # 8653
State of Florida.

Jerikka
1161-7181

FIRM ZONE: AE	BASE FLOOD ELEVATION: 6'
DATE: 3-27-01	SCALE: 1" = 40'
DRAWN BY:	REVISED :
	JOB No. : D1-2022